

# STATE OF MINNESOTA

(NORTHERN SECTION)

## TRIANGULATION DIAGRAM

U.S. DEPARTMENT OF COMMERCE

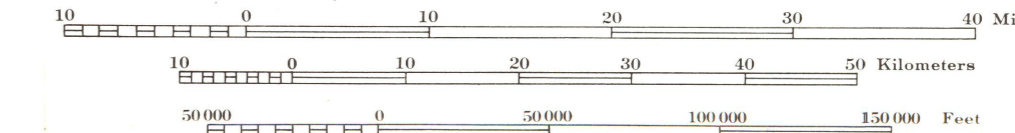
ENVIRONMENTAL SCIENCE SERVICES ADMINISTRATION

COAST AND GEODETIC SURVEY

WASHINGTON, D.C.

April 1968

(Not For Navigational Purposes)



### HORIZONTAL CONTROL

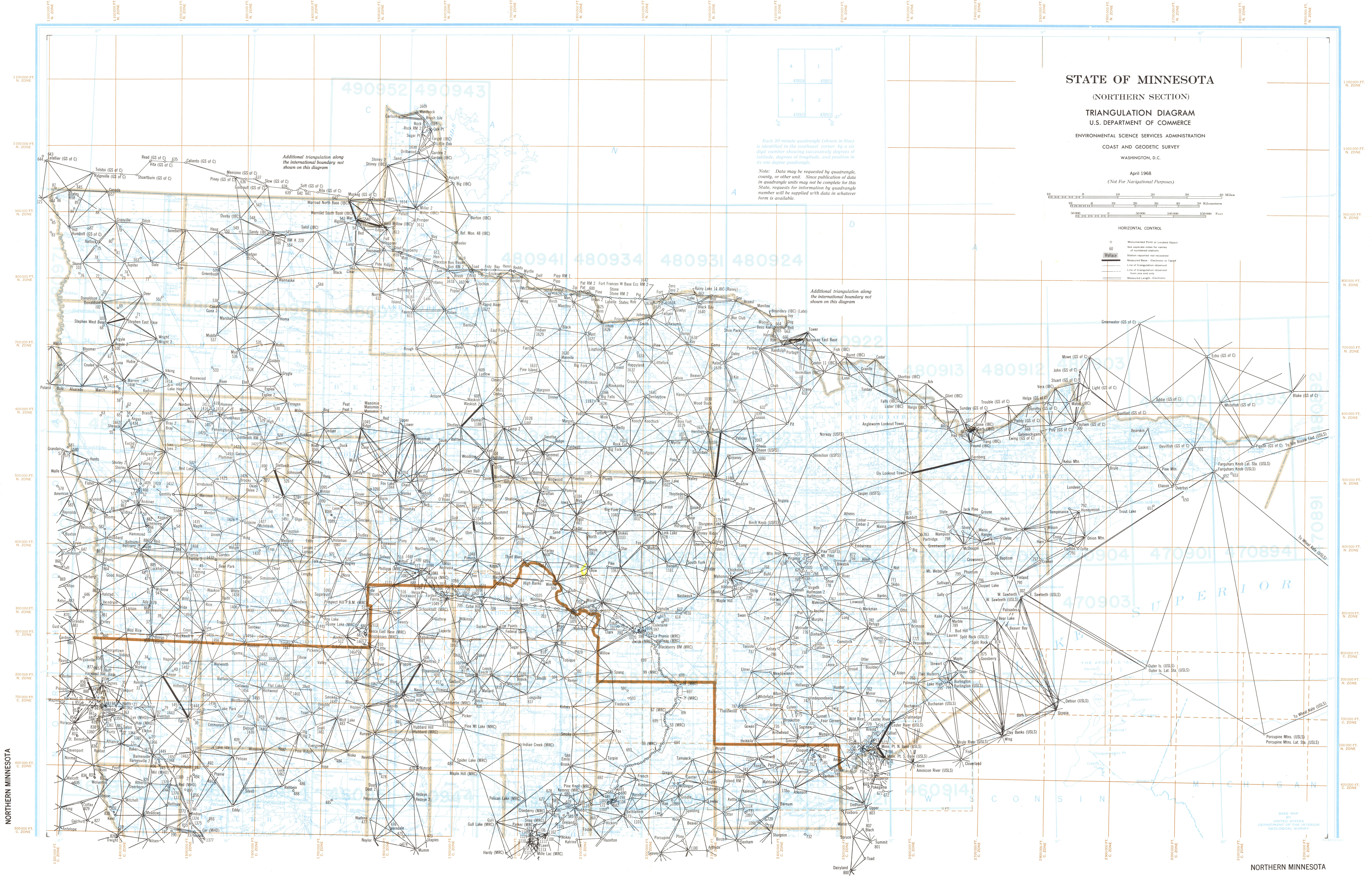
- Monumented Point or Located Object
- See separate index for names of monumented stations
- Station reported not recovered
- Measured Base - Electronic or Taped
- Line of triangulation observed from one end only
- Measured Length - Electronic

Each 30 minute quadrangle (shown in blue) is identified in the southeast corner by a six digit number showing successively degrees of latitude, degrees of longitude, and position in its one degree quadrangle.

Note: Data may be requested by quadrangle, county, or other unit. Since publication of data in quadrangle units may not be complete for this State, requests for information by quadrangle number will be supplied with data in whatever form is available.

Additional triangulation along the international boundary not shown on this diagram

Additional triangulation along the international boundary not shown on this diagram



NORTHERN MINNESOTA

NORTHERN MINNESOTA